

READING BOROUGH COUNCIL

REPORT BY DIRECTOR OF ENVIRONMENT AND NEIGHBOURHOOD SERVICES

TO:	TRAFFIC MANAGEMENT SUB-COMMITTEE		
DATE:	17 JUNE 2015	AGENDA ITEM:	13
TITLE:	LOCAL SUSTAINABLE TRANSPORT FUND UPDATE		
LEAD COUNCILLOR:	TONY PAGE	PORTFOLIO:	STRATEGIC ENVIRONMENT, PLANNING AND TRANSPORT
SERVICE:	TRANSPORTATION & STREETCARE	WARDS:	BOROUGH WIDE
LEAD OFFICER:	CHRIS MADDOCKS	TEL:	0118 937 4950
JOB TITLE:	TRANSPORT PLANNING MANAGER	E-MAIL:	chris.maddocks@reading.gov.uk

1. EXECUTIVE SUMMARY

- 1.1 The purpose of this report is to update the Sub-Committee on progress with delivery of the Local Sustainable Transport Fund (LSTF) Small Package, for which £4.9m funding was approved by the Department for Transport (DfT) in July 2011 and the LSTF Large Partnership Package, for which £20.692m funding was approved by the DfT in June 2012.
- 1.2 Detailed decisions are mainly delegated to the Steering Group level in consultation with the Lead Member for Strategic Environment, Planning & Transport. The Steering Group comprises corporate and transport officers and representatives from the Public Health team and the Local Enterprise Partnership (LEP). This report includes records of recent decisions made by the Steering Group for the Sub-Committee to note.
- 1.3 This report provides an update on each of the five delivery themes of the LSTF programme, with particular focus on projects that have reached milestones within the last three months.

2. RECOMMENDED ACTION

- 2.1 The Sub-Committee is asked to note the progress made on the Local Sustainable Transport Fund Projects since the last report and that officers continue to deliver this programme and report progress to this Sub-Committee.
- 2.2 The Sub-Committee is asked to note the evaluation of the on-carriageway advisory cycle lane schemes on Lower Henley Road and Wokingham Road as set out in paragraph 4.9 and to retain the scheme on Lower Henley Road in its

3. POLICY CONTEXT

- 3.1 The LSTF is a £560m fund made available by the DfT with the aim of implementing local sustainable transport measures that will deliver lasting benefits to support the local economy and reduce carbon.
- 3.2 Reading successfully secured £4.9m funding in July 2011 for a LSTF Small Project to deliver a package of transport investment measures which are complementary to those already being progressed through the core Local Transport Plan (LTP) implementation programme. The package is also complementary to key planning documents including the Core Strategy, Reading Central Area Action Plan and Reading Station Area Framework.
- 3.3 In partnership with Wokingham Borough Council, West Berkshire Council, the Thames Valley Local Enterprise Partnership (LEP) and the NHS Berkshire West Primary Care Trust (public health function now located within the Local Authority), Reading secured a further £20.692m for an LSTF Large Project in June 2012 to deliver a package of transport investment measures to benefit the wider urban area.
- 3.4 In addition, the DfT announced in July 2014 that Reading Borough Council has been awarded £996k LSTF revenue funding for 2015/16. The project proposal includes a range of sustainable transport initiatives focused on neighbourhood-based active travel interventions and developing more interactive online resources, which will help to support the Council's ongoing digital services initiatives.

4. PROGRAMME PROGRESS

- 4.1 The five delivery themes of the complete LSTF Package are Personalised Travel Planning; Fares, Ticketing and Information; Cycle Hire; Active Travel; and Park and Ride/Rail. Over 25 projects have been identified within these themes, as set out in the bid and since further developed. Substantial progress has been made on all of these projects to date and many are reaching significant milestones shortly. A summary of progress by delivery theme is outlined below.
- 4.2 **Personalised Travel Planning:** The substantial programme of Personalised Travel Planning involving Travel Advisors providing sustainable travel advice to residents and businesses throughout the Reading urban area was completed in October 2014.
- 4.3 **Fares, Ticketing and Information:** The first and second phases of the programme of traffic signal upgrades are underway with works recently completed at Bath Road/Hogarth Avenue, Bath Road/Burghfield Road, The Meadway/Church End Lane, Queens Road/Sidmouth Street, Berkeley Avenue/Coley Avenue and the pedestrian crossing at Caversham Road/Randolph Road. Works are currently underway at Bath Road/Russell Street and A33/IDR, and works are due to commence at Berkeley Avenue/Rose Kiln Lane/St. Saviours Road. The upgrade to

the method of control of the signals will improve junction efficiency and provide benefits across modes.

- 4.4 **Cycle Hire:** Usage of the ReadyBike cycle hire scheme continues to be positive, with the docking stations at Christchurch Green, Reading University, Town Hall Square, Broad Street, Bridge Street, Thames Valley Park, Reading Station and Caversham Centre continuing to have particularly high levels of usage. Total rentals from the launch of the scheme in mid-June to the end of April are recorded as 22,595, covering an estimated 115,557 miles, with an ongoing mix of leisure, commuter and student use. Day tickets are popular for trying out the system and for occasional use.
- 4.5 The new docking station at Earley Station was launched on 18th March.
- 4.6 An event to mark the first year of the scheme is planned to take place at the University of Reading on the 10th June to celebrate the successful first year and to provide further publicity for the scheme.
- 4.7 Proposals are being developed to relocate a small number of docking stations from areas of very low usage to areas of high demand in order to ensure the longer-term sustainability of the scheme. Usage data from the first full year of operation and feedback from the customer survey undertaken in December are being used as an evidence base to develop these proposals.
- 4.8 The opportunity to appoint a sponsor for the scheme is continuing to be investigated by officers.
- 4.9 **Active Travel:** Evaluation of the recently introduced corridor advisory cycle schemes along Lower Henley Road and Wokingham Road indicates that there have been no injury accidents recorded since the advisory cycle markings were implemented and the Council has not received any further comments in relation to either scheme. In response to a previous complaint, an investigation by the Local Government Ombudsman concluded that the section of advisory cycle lane on the north side of Wokingham Road between Regis Park Road and Melrose Avenue which is less than 1.2m wide should be removed (see plan at Appendix A). It is estimated that the cost of removing the full schemes and reinstating the previous road markings would be approximately £30k, therefore it is recommended to retain the scheme on Lower Henley Road in its current form, and to amend the scheme on Wokingham Road between Regis Park Road and Melrose Avenue in line with the Local Government Ombudsman's recommendation. In addition officers will continue to monitor usage of both schemes.
- 4.10 Please refer to the Major Projects Update report for progress on the pedestrian cycle bridge over the River Thames.
- 4.11 **Park & Ride/Rail:** Please refer to the Major Projects Update report for progress on the park and ride sites at Mere oak and Winnersh Triangle.
- 4.12 **LSTF Revenue 2015/16:** Officers continue to work up a programme of sustainable transport initiatives for the LSTF Revenue 2015/16 project, focused on neighbourhood-based active travel interventions and developing more interactive

online resources. Progress on this project will be reported to future meetings of the Sub-Committee.

5. CONTRIBUTION TO STRATEGIC AIMS

5.1 The LSTF Project supports the aims and objectives of the LTP and contributes to the Council's strategic aims, as set out below:

- To develop Reading as a Green City with a sustainable environment and economy at the heart of the Thames Valley.
- To promote equality, social inclusion and a safe and healthy environment for all.

6. COMMUNITY ENGAGEMENT AND INFORMATION

6.1 Consultation activities on LTP3 during its development contributed to the LSTF submissions. Engagement is a key component of the LSTF programme and consultation with stakeholders and local communities has been undertaken throughout the project.

6.2 Individual consultations on key LSTF projects have been undertaken throughout the duration of the programme, including consultation forms being published and updated on the corporate website as appropriate.

7. LEGAL IMPLICATIONS

7.1 Legal support has been allocated to progress planning and land acquisition requirements for key projects and to offer contractual advice for procurement exercises.

8. FINANCIAL IMPLICATIONS

8.1 Funding approved by DfT for the Reading LSTF Small Package and the LSTF Large Partnership Package comprises both revenue and capital ring-fenced grants and local contributions.

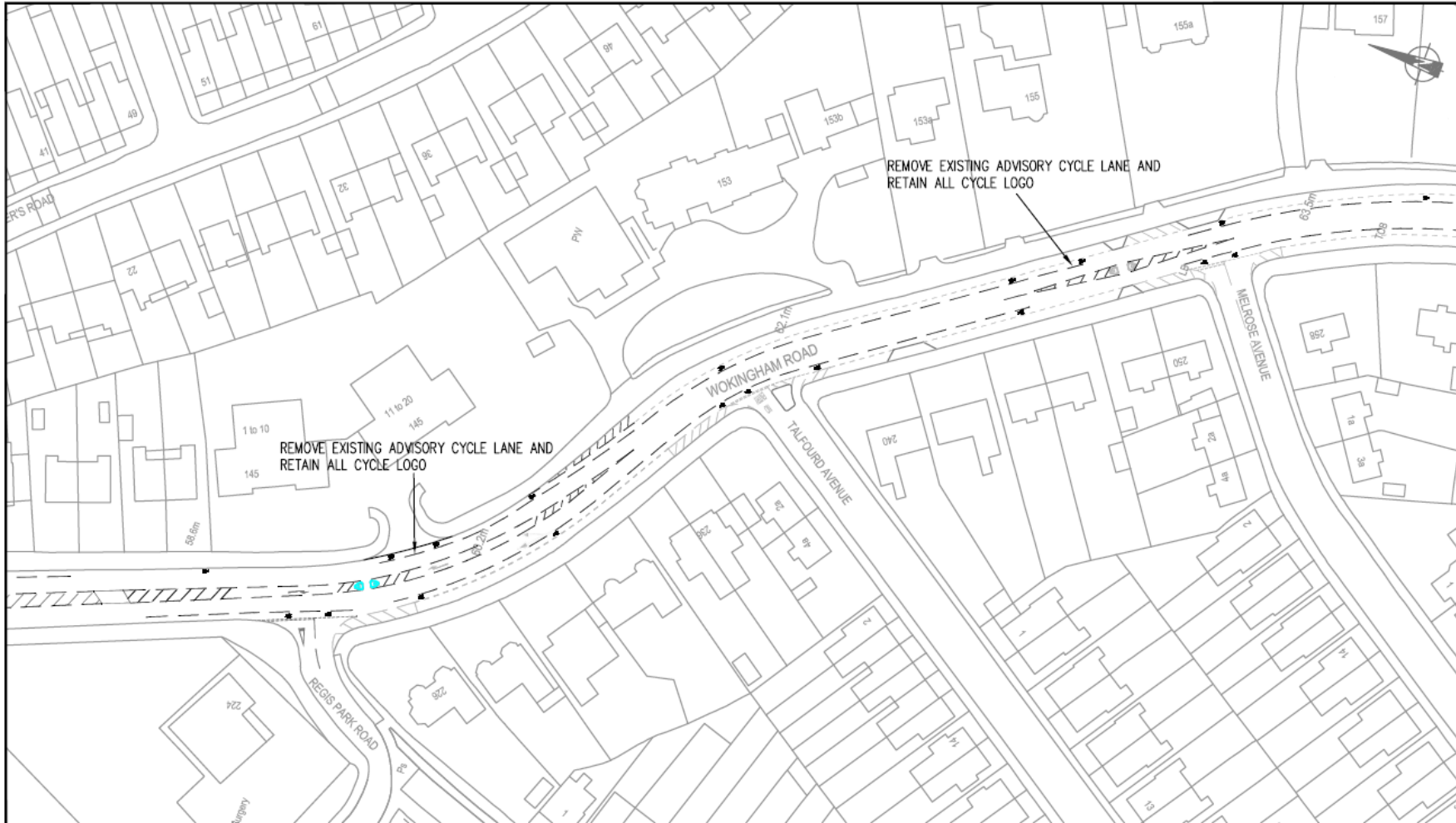
9. BACKGROUND PAPERS

9.1 Cabinet reports - 11th April 2011 and 28th November 2011.

9.2 Traffic Management Advisory Panel reports - 9th September 2011 to 14th March 2013.

9.3 Traffic Management Sub-Committee reports since 13th June 2013.

Appendix A - Wokingham Road Advisory Cycle Lane



Reading
BOROUGH COUNCIL

Department of Environment
Culture and Sport
Civic Centre
Reading
RG1 7TD

project		scale		FAD Drawing Location:	
WOKINGHAM ROAD		N.T.S		drawn	JCH
drawing		drawing no.		checked	SB
ADVISORY CYCLE LANE - REMOVAL				approved	SB
				date	JUNE 2015